



Technical Bulletin

Mini Cooper™ 6 Volt - Assembly & Charging

As part of our ongoing commitment to customer satisfaction, we recently made an update to include instructions for assembly and charging of the Mini Cooper 6 Volt.

The following technical bulletin on the Mini Cooper 6 Volt **MODEL NO. KT1098** has been issued.

This current update covers potential problems with assembly and charging procedures that need to be corrected at the time of installation to prevent mechanical failure.

Summary of Changes:

In response to consumer reports on the incorrect assembly of the motor. The motor has been installed incorrectly on the bottom of the unit: **See Figure 1**

WARNING! This will cause mechanical failure of both motor and wiring if not corrected at the time of assembly.



Figure 1

TOOLS REQUIRED:

Flat head screwdriver

INSTRUCTIONS TO COMPLETE THE REPAIR:

The right rear wheel must be removed in order to disassemble the motor and it's wiring. Carefully pop the center hub cap to gain access to the snap pin. Once the pin is pulled out, the wheel can now be removed from the axle. **See Figure 2**



Figure 2

Please contact us at **(877) 741-6154** if you have additional questions or feedback.



Technical Bulletin

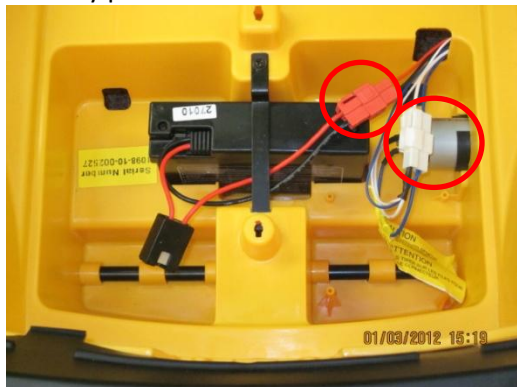
Mini Cooper™ 6 Volt - Assembly & Charging

Slide motor away from the body, insert motor and wiring into body cavity. See **Figure 3**



Figure 3

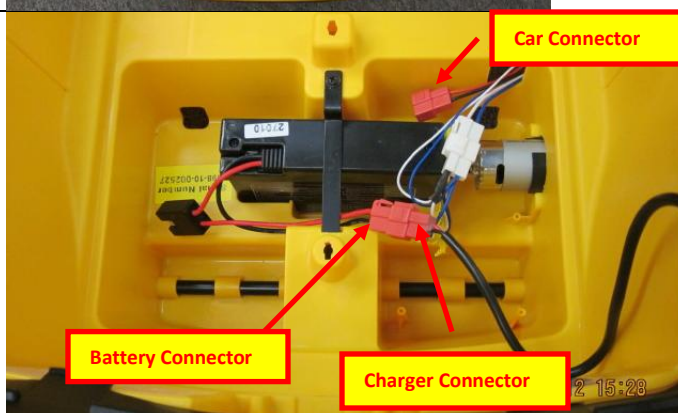
Please note the under seat picture of motor properly positioned & all wiring securely protected.



Proper Charging Instructions

- Disconnect the **red** car connector from the **red** battery connector.
- Connect the **red** connector from the charger to the opposite **red** connector from the battery (male to female).

NOTE: First charge before use of the vehicle is 24 hours but not more than 30 hours, when normal re-charging, 8-16 hours, but not more than 30 hours.



*****NO motor function during charge time!*****

Please contact us at **(877) 741-6154** if you have additional questions or feedback.



Technical Bulletin

Mini Cooper™ 6 Volt - Assembly & Charging

We have had reports of no motor function after a complete charge.

The **ON/OFF** switch has been overlooked. Be sure to turn clockwise (right) to the **ON** position, and then press the foot pedal.



Please contact us at **(877) 741-6154** if you have additional questions or feedback.