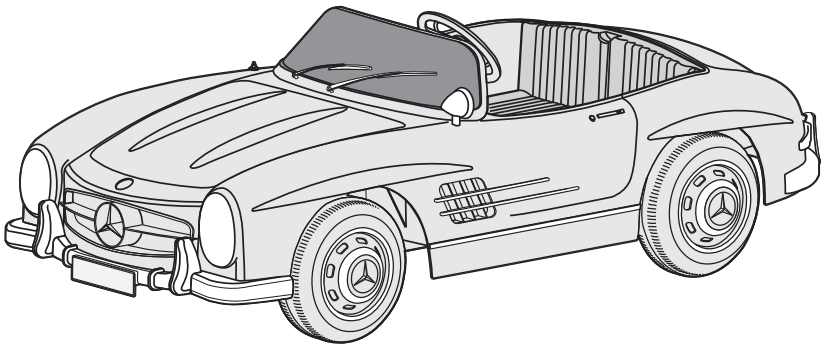




Mercedes-Benz® SL300

ELECTRIC RIDE-ON

User Guide



Please read this Owner's Manual completely before assembling or operating this product. Assembly of this product should be carried out by an adult. **Do not return this product to the store.** If any parts are missing or damaged, please contact one of our Customer Service Representatives.

Intellectual Property Rights Licensed by Daimler Chrysler AG

©2008 Pacific Cycle. All Rights Reserved.

www.kidtraxtoys.com (877) 741-6154

Made in CHINA.

Styles and colors may vary.

Distributed by

Pacific Cycle Inc., 4902 Hammersley Rd, Madison, WI 53711, USA

07.18.07
4358-4365

About Your New Mercedes-Benz® SL300

Thank you for purchasing the Mercedes-Benz® SL300. Kid Trax wants your child to enjoy this product for years to come. Keep these points in mind as you read this guide:

- **The MBSL300 is recommended for children 3 and up. Maximum combined weight is 59 kg (130 lbs).**
- **Contains small parts, not suitable for children under 3 years old.**
- **ADULT SUPERVISION REQUIRED!**
- Battery must be charged prior to first use (see pages 3-4).
- Wheels must be assembled properly (see page 4).
- Children must follow safety rules for riding (see page 6).
- Read and explain operating instructions to your child (see pages 8-10).
- **ADULTS ONLY:** Recharge battery according to directions (see pages 3-4) and maintain battery (see page 11).

WARNING

FOR THE SAFETY OF YOUR CHILD, PLEASE READ ALL WARNINGS AND ASSEMBLY/USE INSTRUCTIONS. KEEP THIS GUIDE FOR FUTURE REFERENCE.

- **ADULT ASSEMBLY REQUIRED.** The product contains small parts, which are for adult assembly **ONLY**. Keep small children away when assembling.
- **ALWAYS remove protective material and poly bags and dispose before assembly.**

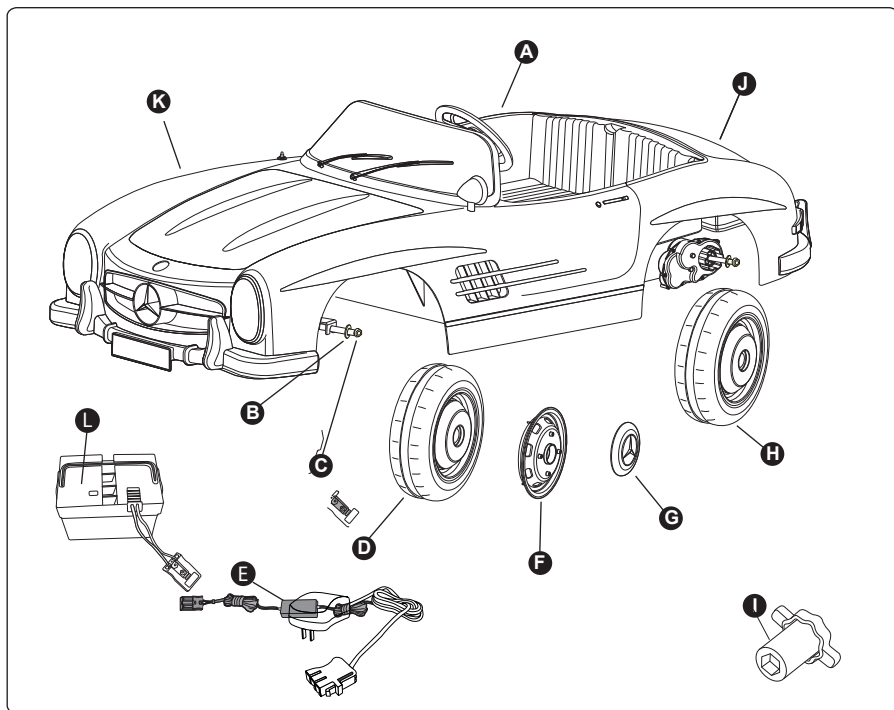
CAUTION

- Park the MBSL300 indoors or cover it with a tarp to protect it from wet weather. **DO NOT** leave vehicle in sun for long periods of time or fading may occur. Store in shade or cover with tarp.
- **DO NOT** drive the MBSL300 in loose dirt, sand or fine gravel, which could damage moving parts, motors or the electric system, which could void the warranty.
- **DO NOT** wash the MBSL300 with a hose. **DO NOT** wash the MBSL300 with soap and water. **DO NOT** drive the MBSL300 in rainy or snowy weather. Water will damage the motor, electric system and battery.

Service and Repairs

- **DO NOT** return this product to the place of purchase.
- Lay out and identify all parts before assembly. If any parts are missing, call Pacific Cycle Consumer Relations at (877) 741-6154.
- Include the model number and manufacture date, found underneath the body and a brief description of the part.
- If your MBSL300 needs service or repairs, call Pacific Cycle Consumer Relations at (877) 741-6154 for an authorized service center.

Parts List



- A** Car body
- B** Washer x4
- C** Nut x4
- D** Front wheel x2
- E** Charger
- F** Wheel hub x4
- G** Hub cap x4
- H** Rear wheel x2
- I** Nut wrench
- J** Trunk
- K** Hood
- L** Battery

Charge Battery Prior To First Use

YOU MUST CHARGE THE 12-VOLT BATTERY FOR A “FULL” 24 HOURS PRIOR TO FIRST USE. FAILURE TO CHARGE THE BATTERY AS DIRECTED WILL CAUSE PERMANENT DAMAGE TO THE BATTERY AND VOID YOUR WARRANTY.

AFTER EACH USE, OR ONCE A MONTH MINIMUM, CHARGE THE BATTERY FOR A “FULL” 16 HOURS. DO NOT LEAVE THE BATTERY ON THE CHARGER FOR MORE THAN 30 HOURS. READ THE FOLLOWING WARNINGS BEFORE CHARGING THE BATTERY.

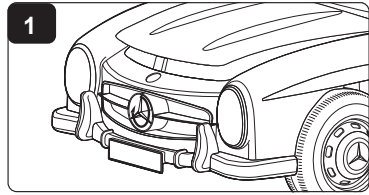
WARNING

• **PREVENT FIRE AND ELECTRIC SHOCK:**

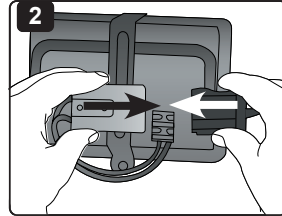
- Use **ONLY** the 12-volt rechargeable battery and charger supplied with your vehicle. **NEVER** substitute the battery or the charger with another brand. Using another battery or charger may cause a fire or explosion.
- **DO NOT** use the battery or charger for any other product. Overheating, fire or explosion could occur.
- **NEVER** modify the electric circuit system. Tampering with the electric system may cause a shock, fire or explosion or may permanently damage the system.
- **DO NOT** allow direct contact between battery terminals. Fire or explosion can occur.
- Battery posts, terminals and related accessories contain lead and lead compounds, chemicals known to the State of California to cause cancer and reproductive harm. **WASH HANDS AFTER HANDLING.**
- **DO NOT** allow any type of liquid on the battery or its components.
- Explosive gases are created during charging. **DO NOT** charge near heat or flammable materials. Charge the battery in a well-ventilated area **ONLY**.
- **NEVER** pick up the battery by the wires or charger. Damage can occur to the battery and may cause a fire. Pick up the battery by the case **ONLY**.
- Charge the battery in a dry area **ONLY**.
- **DO NOT** open the battery. Battery contains lead acid and other materials that are toxic and corrosive.
- **DO NOT** open the charger. Exposed wiring and circuitry inside case may cause electric shock.
- **ONLY ADULTS** may handle or charge the battery. **NEVER** allow child to handle or charge the battery. Battery is heavy and contains lead acid (electrolyte).
- **DO NOT** drop the battery. Permanent damage to the battery could occur or cause serious injury.
- Before charging the battery, check for wear or damage to the battery, charger, its supply cord and the connectors. **DO NOT** charge the battery if any damage to parts has occurred. Replace with Pacific Cycle parts **ONLY**.
- **DO NOT** allow the battery to drain completely. Recharge the battery after each use or once a month if not used regularly.
- **DO NOT** charge the battery upside down.
- **ALWAYS** secure the battery with the bracket. Battery can fall out and injure a child if vehicle tips over.

Connect Charger to Battery

1. Open the hood by rotating the “star” to the right (clockwise) (figure 1). Push on the lever and lift the hood.



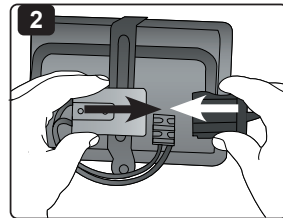
2. Plug the charger connector into the battery (figure 2).
Use ONLY the 12-volt charger included with the product.
NOTE: No metal contact intended to be in this area. Correct as shown.



3. Plug the charger into a standard wall outlet (figure 3). Light on charger will glow ORANGE while plugged in. The charger may feel warm during charging. This is normal and not a cause for concern. When light turns green battery is fully charged.

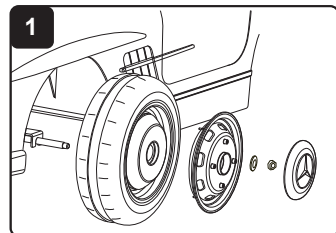
Disconnect Charger from Battery

1. Unplug the charger from the wall outlet.
2. Unplug the charger connector from the battery.
3. Plug the engine connector into the battery (Figure 1).



Attach the Wheels

1. Remove the nut and washer from the front axle (you may need to use the nut wrench). Locate a wheel marked “Front” on the inside and slide it into the shaft. Install a wheel hub and secure it with the washer and nut. Tighten snugly with the nut wrench until you can see about two threads on the axle. **DO NOT OVERTIGHTEN.** Repeat for the other side. Repeat for the rear wheels marked “Rear.” Snap the hub caps on all 4 wheels using your hand.



Using the MBSL300

WARNING

PREVENT INJURIES AND DEATHS:

- **NEVER LEAVE CHILD UNATTENDED.** **ALWAYS** keep child in view when child is in vehicle. Direct adult supervision is **REQUIRED**.
- **NEVER** use in roadways, near cars, on or near steep inclines or steps, swimming pools or other bodies of water.
- **ALWAYS** wear shoes.
- **ALWAYS** sit on the seat.
- **NEVER** allow more than two (2) riders in the vehicle.

- The MBSL300 is for children age 3 and up.
- **Maximum combined weight is 59 kg (130 lbs) DO NOT** overload the MBSL300 **DO NOT** tow anything behind the MBSL300. Damage to the motor or gears could occur, which could void the warranty.

ADULT SUPERVISION REQUIRED!

- Your child will enjoy many happy hours riding the MBSL300. You, as the responsible adult **MUST** supervise your child riding in the MBSL300!
- Your young child's judgment skills are still developing, and they may be tempted to drive the MBSL300 into unsafe areas or in an unsafe manner. **ALWAYS** watch to see where your child is going, and that they handle the vehicle safely.
- Read the "Rules for Safe Riding" (page 6) out loud to your child and their playmates, and **INSIST** they follow the rules.
- Point out all the parts of the dashboard, the foot pedal and the shifter to your child. Use the diagrams on page 7 to find the parts on the MBSL300.
- Show your child how to safely operate the MBSL300 (pages 8-10).
- To prevent unsupervised riding in the MBSL300, disconnect or remove the battery (see page 9).

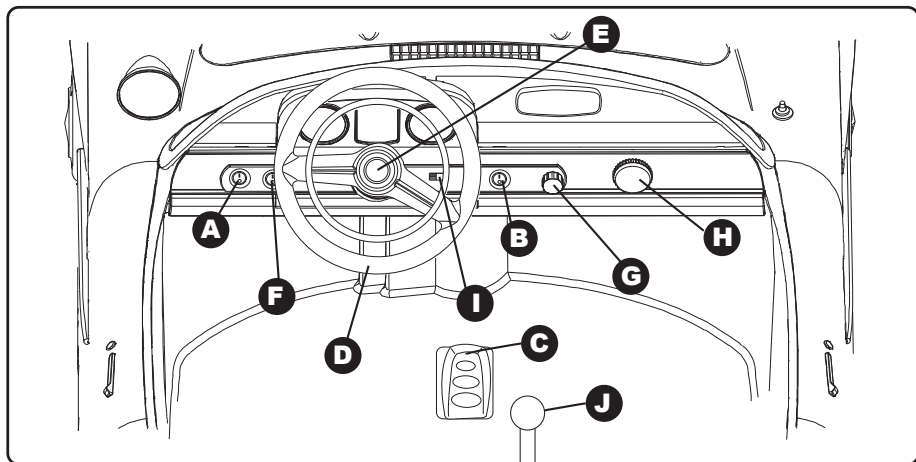
Rules for Safe Riding

READ THESE RULES ALOUD TO YOUR CHILD AND THEIR PLAYMATES AND MAKE SURE THEY UNDERSTAND THEM!

- **ALWAYS DRIVE THE MBSL300 WITH AN ADULT WATCHING.**
- **Riders must be 3 years of age or older.**
- **ALWAYS sit in the seat.**
- **ALWAYS wear shoes.**
- **ONLY one or two riders in the MBSL300.** If more children ride on the hood or the trunk, they may fall off, block the driver's view or cause the MBSL300 to tip over. Serious injury could occur! Also, the MBSL300 may be overloaded, which could damage the motor or gears (weight maximum of 59 kg. [130 lbs]).
- **DO NOT drive near full-sized, motorized vehicles.** It is **DANGEROUS** to drive the MBSL300 on driveways, streets or alleys that are used by full-sized motorized vehicles. The MBSL300 is small and may be out of sight to the driver of a full-sized car.
- **DRIVE ONLY ON LEVEL GROUND!** The MBSL300 will operate best on concrete or other firm surfaces.
- **NEVER drive near water! DO NOT** drive toward a swimming pool, creeks or a pond! Drowning could occur.
- **DO NOT drive DOWN a steep slope.** The MBSL300 may go too fast, causing it to tip over or slip.
- **DO NOT drive UP a steep slope.** The motor may stop and the MBSL300 could roll backward and go too fast, causing it to tip over.
- **DO NOT drive near drop-offs, such as steps or decks.** The MBSL300 could tip over.
- **Keep hands, hair and clothes AWAY from moving parts, such as the wheels or the motor.** Serious injury could occur.
- **DO NOT drive near flammable vapors, such as gasoline, paint thinner or liquid wax that are usually stored in the garage.** The MBSL300's electric switch will spark when first turned on or when turned off and could cause an explosion or fire! Keep flammable products tightly sealed and stored away from the MBSL300.
- **DO NOT drive the MBSL300 in rainy or snowy weather.** Water will damage the motor, electric system and battery. Poor traction may cause the MBSL300 to slip or the wheels to spin, which could cause the power to shut down (see thermal fuse information in Battery Maintenance, page 11).
- **DO NOT drive the MBSL300 in loose dirt, mud, sand or fine gravel,** which can damage moving parts, motors or the electric system. Poor traction could cause the MBSL300 to slip or the wheels to spin, which could cause the power to shut down (see thermal fuse information in Battery Maintenance, page 11).
- **DO NOT play the radio too loudly,** because it may distract the driver.
- **Only experienced drivers may use "High" speed (5 MPH).** The MBSL300 might go too fast for beginners.

Get to Know Your MBSL300 Before Driving

Dashboard



- A Power switch** - Turn on the power switch. The power must be turned on in order to drive the MBSL300 and for the sounds to function.
- B High/Low speed switch** - Switches between high and low speeds. Will only work if high speed switch is locked (I).
- C Foot pedal** - The foot pedal controls forward/reverse motion.
To Stop - Release the foot pedal, and the vehicle will stop.
NOTE: When the foot pedal is released, the vehicle will coast slightly before coming to a complete stop.
- D Steering** - Turn the vehicle to the left or right by rotating steering wheel. Use both hands.
- E Horn button** - Press to hear "horn" sound.
- F Front light switch** - Turn on the Front light by switch on that knob.
- G Radio power** - Turn the radio power clockwise to operate the radio.
- H Tuner** - Adjust that tuner to achieve required channel.
- I Lock switch** - Shift to left for locking the high speed and shift to right side for releasing it that can go both low and high speed.
- J Shifter** - Shift lever to go forward or reverse.

General Operation

1. Turn on the power switch.
2. Adjust shifter in a forward position or reverse.
3. Press down on the foot pedal, and the car will go forward at 3.2 or 7.5 km/h / 2 MPH or 5 MPH (depending on position of High/Low speed switch).
4. Release the foot pedal, and the car will stop.
5. Turn off power switch when not playing.

NOTE: Always shut off power before climbing in or out.

High Speed (5 MPH) for Advanced Drivers

ONLY experienced drivers may use "High" speed (7.5km/h). The shifter will not go into "High" speed until it is unlocked. ONLY AN ADULT MAY operate the locking switch.

1. Shift the locking switch to right side by screw driver that can release the speed limit control function. At that time, vehicle can go with Low and High speed which base on the "Low/High switch" position.
2. Push the shifter forward. NOTE: The car MUST come to a complete stop before shifting into reverse and back into low or high speed. Damage to the gears and motor could occur.
3. Press down on the foot pedal, and the car will go forward at 7.5km/h.
4. Release the foot pedal, and the car will stop.

NOTE: When the foot pedal is released, the vehicle will coast slightly before coming to a complete stop.

Reverse

IMPORTANT! The vehicle MUST come to a complete stop before shifting into reverse and into low or high speed. Damage to the gears and motor WILL occur.

1. Release the foot pedal to stop the vehicle.
2. Pull the shifter all the way back into reverse.
3. Press down on the foot pedal, and the car will go in reverse at 3.2Km/h or 2 MPH.
4. Release the foot pedal, and the car will stop. NOTE: When the foot pedal is released, the car will coast slightly before coming to a complete stop.

Low Speed (2 MPH) for Beginning Drivers

1. Turn on the power switch.

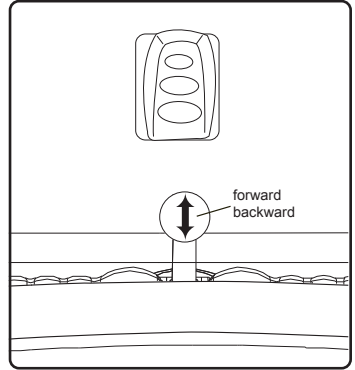
2. Push the shifter into forward position.

NOTE: The shifter comes from the factory locked in the "Low" speed (3.2km/h or 2 MPH) position. The shifter will not go into "High" speed until it is unlocked.

3. Press down on the foot pedal, and the vehicle will go forward at 3.2km/h or 2 MPH.

4. Release the foot pedal, and the vehicle will stop.

NOTE: When the foot pedal is released, the vehicle will coast slightly before coming to a complete stop.



Removing the Battery

It may be necessary to remove the battery for recharging, storage or replacement. ONLY AN ADULT MAY REMOVE THE BATTERY.

1. Turn "star" to lift up the Hood.

2. Unplug the battery connector from the battery.

3. Unscrew the screws from the battery bracket (Figure 1). Remove and set aside the bracket and screws. Lift the battery from its compartment.

ONLY AN ADULT MAY HANDLE THE BATTERY. DO

NOT drop the battery. Permanent damage could occur.

4. Reverse steps 1 - 3 to replace battery. Ensure end of battery bracket goes into slot at back of battery.

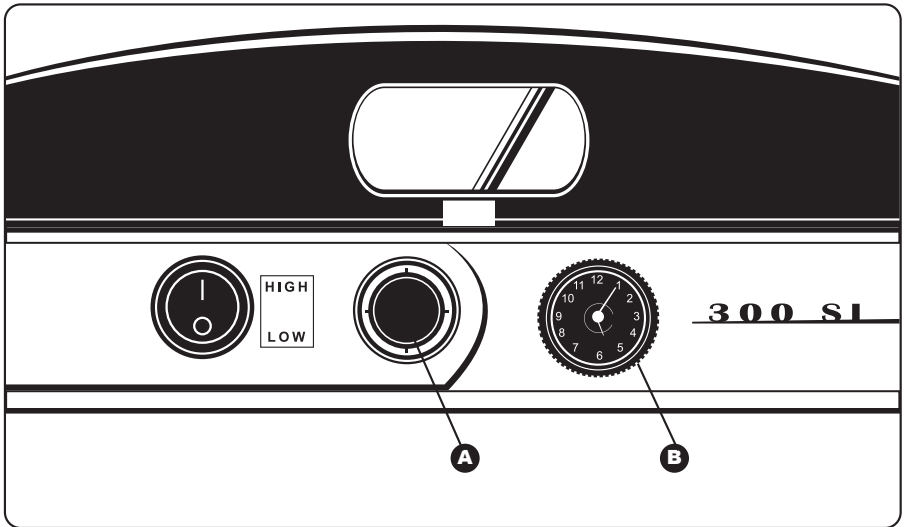
Using the FM Radio

A Volume and ON/OFF knob

To turn on the radio, turn the knob to the right. To adjust the volume, turn the knob to the right for more volume. Turn the knob all the way to the left to turn the radio off. **IMPORTANT! Do not play the radio too loudly as it may distract the driver.**

B Tuning button

Turn the knob to the left and to the right to find an FM station.



Battery Maintenance

IMPORTANT! READ AND UNDERSTAND THE WARNINGS ABOUT THE 12-VOLT BATTERY ON PAGE 3.

- **ADULTS ONLY:** After each use, or once a month minimum, charge the battery for a “full” 16 hours. **DO NOT** leave the battery on the charger for more than 30 hours. See pages 3-4 for recharging instructions.
- Low battery signal will sound when the battery is running low on power. A “beeping” sound will interrupt the “engine running” sound until the battery is recharged. See pages 3-4 for recharging instructions.
- The 12-volt battery will eventually lose the ability to hold a charge. Depending on the amount of use, and varying conditions, the battery should operate for one to three years.
- **DO NOT** leave the battery in the MBSL300 for long periods of time unused. Battery may drain completely, causing permanent damage. Disconnect the battery connector from the engine connector.
- **ADULTS ONLY: Handle the battery with care. DO NOT** drop the battery. Permanent damage to the battery could occur.
- If the battery is removed from the MBSL300 and stored, **DO NOT** store the battery where temperatures are over 24°C (75°F) or under -24°C (-10°F).
- It is best to leave the battery in the battery compartment of the vehicle for long storage periods. If you cannot do this or have a multiple batteries, please store the battery on a wood surface to avoid cement floor surface discharge. Always wipe the battery clean with a dry cloth prior to storage. You will still need to charge your battery once each month (16 hours) during long storage periods to ensure battery life.
- **If the battery leaks or has completely discharged, it is no longer usable.** Remove the battery according to the instructions on page 9 and place it in a plastic bag. See page 17 for disposal directions. Replace the battery with a 12-volt battery **ONLY**. See page 16 to reorder parts.
- If the battery leaks, **DO NOT** allow acid from the battery to contact skin or eyes. If this happens, call your physician immediately. Flush with cool water for 15 minutes.
- If the battery leaks, **DO NOT** ingest acid. If this happens, call your physician immediately. Give water, milk of magnesia or egg whites. **DO NOT** induce vomiting.
- The 12-volt battery features a thermal fuse with a reset fuse in the battery connector that will automatically trip and cut all power to the MBSL300 if the motor, electric system or battery is overloaded. The fuse will reset and power will be restored after approximately 15 seconds. To avoid losing power, follow these guidelines:
 - DO NOT** overload the MBSL300. Maximum weight allowed: 59 kg (130 lbs).
 - DO NOT** tow anything behind the MBSL300
 - DO NOT** drive up steep slopes.
 - DO NOT** drive into fixed objects, which may cause the wheels to spin, causing the motor to overheat.
 - DO NOT** drive in very hot weather; components may overheat.
 - DO NOT** allow water or other liquids to come in contact with the battery or other electric components.
 - DO NOT** tamper with the electric system. Doing so may create a short, causing the fuse to trip.

If the thermal fuse trips repeatedly during normal use, your MBSL300 may need repair. Call Pacific Cycle Consumer Relations at (877) 741-6154.

Maintaining Your MBSL300

- Periodically check to make sure the wheel nuts are tight. To check the wheel's nuts, use a flat-head screwdriver to gently pry off the hubcap. Make sure the battery bracket is securely in place and the plastic parts are not cracked or broken.
- Occasionally use a lightweight oil to lubricate moving parts such as wheels and the steering linkages.
- Park the MBSL300 indoors or cover it with a tarp to protect it from wet weather.
- Keep the MBSL300 away from sources of heat, such as stoves and heaters. Plastic parts may melt.
- **ADULTS ONLY:** Recharge the battery after each use. Recharge the battery at least once a month when the MBSL300 is not being used. See pages 3-4 for instructions about recharging the battery.
- **DO NOT** wash the MBSL300 with a hose. **DO NOT** wash the MBSL300 with soap and water. **DO NOT** drive the MBSL300 in rainy or snowy weather. Water will damage the motor, electric system and battery.
- Clean the MBSL300 with a soft, dry cloth. To restore shine to plastic parts, use a non-wax furniture polish. **DO NOT** use car wax. **DO NOT** use abrasive cleaners.
- **DO NOT** drive the MBSL300 in loose dirt, sand or fine gravel, which could damage moving parts, motors or the electric system.

Troubleshooting Guide

Having problems with your MBSL300? Read through this troubleshooting guide for solutions to common problems. If you still experience problems, call Pacific Cycle Consumer Relations at (877) 741-6154.

PROBLEM: The MBSL300 does not run.

1. POSSIBLE CAUSE: The battery may be low on power.

- After each use, or once a month minimum, charge the battery for a “full” 16 hours. **DO NOT** leave the battery on the charger for more than 30 hours. See pages 3-4 for recharging warnings and instructions.

2. POSSIBLE CAUSE: Thermal fuse has tripped.

- The 12-volt battery features a thermal fuse with a reset fuse in the battery connector that will automatically trip and cut all power to the MBSL300 if the motor, electric system or the battery is overloaded. The fuse will reset and power will be restored after approximately 15 seconds. See page 16 for tips to avoid tripping the thermal fuse.

3. POSSIBLE CAUSE: Wheel nuts are loose.

- If the nuts are not tight, the wheels will not engage the forward gears. Use a flat-head screwdriver to gently pry off the hubcap. Tighten the nut with the nut wrench.

4. POSSIBLE CAUSE: Battery connector or wires are loose.

- Make sure the engine connector is firmly plugged into the battery connector. If you find loose wires around the motor, call Pacific Cycle Consumer Relations at (877) 741-6154.

5. POSSIBLE CAUSE: Battery is dead.

- Have you properly maintained the battery according to the directions? Is the battery old? Your battery may need to be replaced. Refer to the Battery Maintenance instructions on page 16.

6. POSSIBLE CAUSE: electric system is damaged.

- Water may have corroded the system, or loose dirt, gravel or sand might have jammed the switch. Call Pacific Cycle Consumer Relations at (877) 741-6154.

7. POSSIBLE CAUSE: Motor is damaged.

- The MBSL300 needs professional repair. Call Pacific Cycle Consumer Relations at (877) 741-6154.

Troubleshooting Guide

PROBLEM: The 12-volt battery will not recharge.

- 1. POSSIBLE CAUSE: Battery connector or adapter connector is loose.**
 - Make sure the battery connector and the adapter connector is firmly plugged into the battery.
- 2. POSSIBLE CAUSE: Charger is not plugged in.**
 - Make sure the charger is plugged into the wall outlet and the power flow to the outlet is on.
- 3. POSSIBLE CAUSE: Charger is not working.**
 - Are the lights on the charger glowing? If not, the charger may be broken and may need to be replaced. Call Pacific Cycle Consumer Relations at (877) 741-6154.

PROBLEM: The MBSL300 does not run very long.

- 1. POSSIBLE CAUSE: Battery may be undercharged.**
 - You may not be charging the battery long enough. After each use, or once a month minimum, charge the battery for a “full” 16 hours. **DO NOT** leave the battery on the charger for more than 30 hours. See pages 3-4 for recharging warnings and instructions.
- 2. POSSIBLE CAUSE: Battery is old.**
 - The Kid Trax 12-volt battery will eventually lose the ability to hold a charge. Depending on the amount of use, and varying conditions, the battery should operate for one to three years. Replace the battery with a new 12-volt battery. See page 16 to reorder parts.

PROBLEM: Battery buzzes or gurgles when charging.

- 1.** This is normal and not a cause for concern. It may also be silent when charging, which is also normal.

PROBLEM: Charger feels warm when recharging battery.

- 1.** This is normal and not a cause for concern.

PROBLEM: Poor reception on the FM radio.

- 1. POSSIBLE CAUSE: The electric system may be interfering with reception.**
 - Turn the MBSL300 off to improve reception.

Troubleshooting Guide

PROBLEM: The MBSL300 runs sluggishly or beeping occurs.

1. POSSIBLE CAUSE: Battery needs recharging.

- After each use, or once a month minimum, charge the battery for a “full” 16 hours. DO NOT leave the battery on the charger for more than 30 hours. Low battery signal will sound when the battery is running low on power. See pages 3-4 for recharging warnings and instructions.

2. POSSIBLE CAUSE: Battery is old.

- The 12-volt battery will eventually lose the ability to hold a charge. Depending on the amount of use, and varying conditions, the battery should operate for one to three years. Replace the battery with a new Dorel 12-volt battery. See page 16 to reorder parts.

3. POSSIBLE CAUSE: MBSL300 is overloaded.

- **Maximum combined weight is 59 kg (130 lbs). DO NOT** overload the MBSL300 **DO NOT** tow anything behind the MBSL300. **ONLY** two riders at a time.

4. POSSIBLE CAUSE: Driving in harsh conditions.

- Drive only on level ground. The MBSL300 will operate best on concrete or other firm surfaces. **DO NOT** drive up or down steep slopes, in mud or on loose dirt or gravel.

PROBLEM: Cannot shift to high speed.

1. POSSIBLE CAUSE: High/Low switch in low.

- Slide the High/Low switch to the right using a screwdriver. See page 8 for instructions.

PROBLEM: Difficulty Shifting into reverse, high or low speed.

1. POSSIBLE CAUSE: Trying to shift while the MBSL300 is moving.

- The MBSL300 **MUST** come to a complete stop before shifting into reverse and back into low or high speed. Damage to the gears and motor **WILL** occur.

PROBLEM: Loud grinding or clicking noises coming from motor or gear box

1. POSSIBLE CAUSE: Gears are stripped or broken.

- The MBSL300 needs professional repair. Call Pacific Cycle Consumer Relations at (877) 741-6154.

Troubleshooting Guide

PROBLEM: MBSL300 needs a push to go forward.

1. POSSIBLE CAUSE: Poor contact of wires or connectors.

- Make sure the engine connector is firmly plugged into the battery connector. Check for loose wires around the motor and reconnect if necessary.

2. POSSIBLE CAUSE: “Dead spot” on motor.

- A “dead spot” means the electric power is not being delivered to the terminal connection. The MBSL300 needs professional repair. Call Pacific Cycle Consumer Relations at (877) 741-6154.

Replaceable Parts

- Front wheel
- Rear wheel
- Wheel core
- Hardware bag for wheel assembly
- Seat
- Hood
- 12-volt battery
- Charger
- Trunk

To order parts call (877) 741-6154.

Include the model number and manufacture date, found underneath the MBSL300's seat.

Battery Disposal

- The 12-volt battery will eventually lose the ability to hold a charge. Depending on the amount of use, and varying conditions, the battery should operate for one to three years. If the battery will not recharge, replace with the same or equivalent type.

- The 12-volt battery contains lead acid (electrolyte) and must be disposed of properly and legally.

- **DO NOT** throw the battery away with your regular household rubbish! It is illegal in most areas to incinerate lead acid batteries or dispose of them in landfills.

- Exhausted batteries must be correctly disposed of. Many local authority refuse sites have battery recycling bins.

